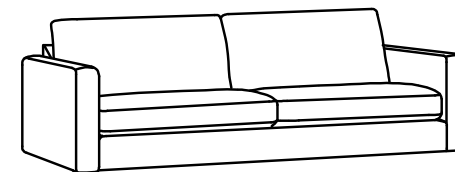


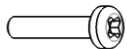


# SEATER

WITH ARMRESTS

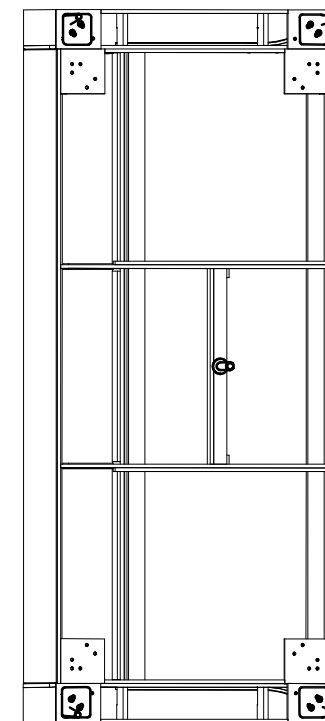
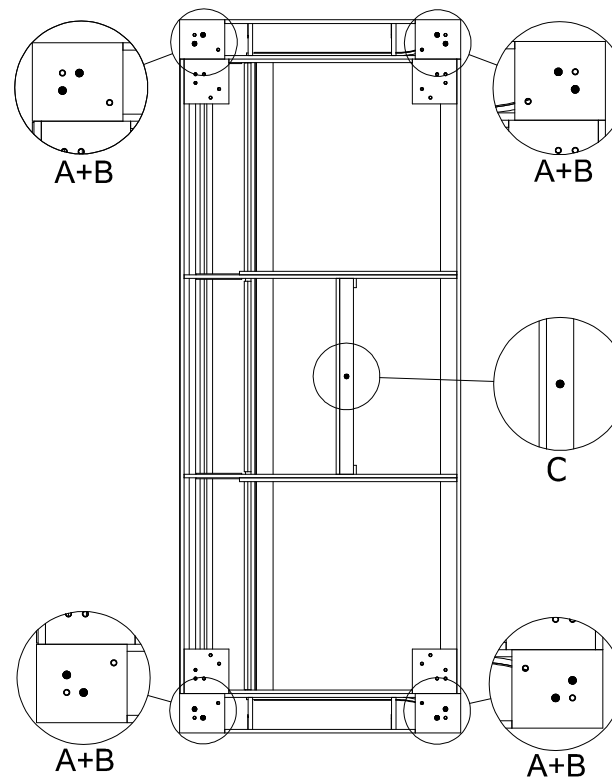
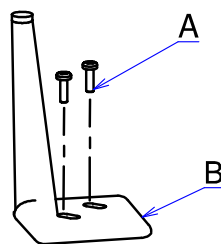


MODULAR SOFA

I

A	8	
B	4	 No. 447 17 cm
C	1	 No. 449 17 cm

II



## IMPORTANT

At least two people are necessary to lift the sofa, do not lift the sofa alone or push it.  
It may cause damage in the connecting mechanisms and may create creaking noise in furniture.  
The sofa has to be placed on a flat and leveled surface.

VILMERS